

Premier IBM i Education Event

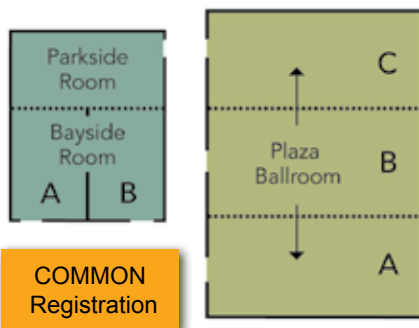


October 5 - 8, 2008

**San Francisco Airport Crowne Plaza
Burlingame, California**

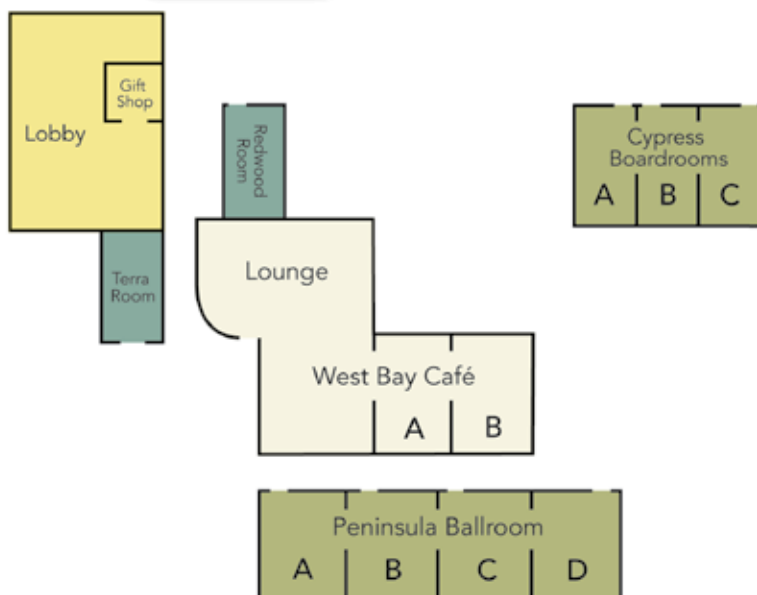
Conference & Expo Guide

Crowne Plaza SFO



COMMON Registration
Plaza Ballroom Foyer

Expo
Plaza Ballroom A/B



Welcome Reception
Plaza Ballroom A/B

Workshop Rooms
Parkside
Bayside A/B
Peninsula Ballroom C/D
Peninsula Ballroom A (LAB)
Peninsula Ballroom B (LAB)



Registration Open

Sunday, October 5

Noon – 8:00 p.m.

Monday, October 6

7:30 a.m. – 5:30 p.m.

Tuesday, October 7

7:30 a.m. – 5:30 p.m.

Wednesday, October 8

7:30 a.m. – 12:30 p.m.



Table of Contents

Crowne Plaza SFO Map		Monday Workshops	5
Registration Hours		Tuesday Workshops	5
Welcome	2	Wednesday Workshops	6
Conference Logistics	3	Upcoming COMMON Events	7
Hotel Information	3	Thank You ELITE Exhibitors	9
On-Site Hotel Arrangements	3	COMMON Expo	10
Handicapped Access	3	Expo Exhibitor Listing	10
Exhibitor Registration and Check-in	3	Expo Hours	10
Speaker Check-in	3	Expo Floor Map	11
Attendee Registration and Check-in	3	Product and Service Listings	12-15
On-Site Registration	3	COMMON Background	16
Badges	3	Code of Ethics	
Conference Attire	3		
Lost and Found	3		
Workshop Handouts	3		
Transportation Around Burlingame	3		
Car Rental	3		
Taxi Service	3		
Shuttle Service	3		
At-a-Glance	4		

Welcome

Workshop Conference & Expo Highlights

Welcome to COMMON Focus 2008 Workshop Conference & Expo featuring three days of intense, focused education!

13 in-depth, all-day educational workshops are being offered – both in lab and lecture-style formats – in a wide range of topic areas. Attendees will attend one workshop per day, providing the opportunity to focus their educational needs on a specific topic each day.

This conference is designed to give attendees the specific skills, information and tools they need to enhance their professional knowledge and improve their organization's IT department. The expertise gained will more than pay for the investment in attending.

Welcome Reception—Sunday 6:00 p.m. - 7:30 p.m. in the Expo

COMMON Focus 2008 kicks off Sunday evening, October 5th at 6:00 p.m. with a Welcome Reception in the Expo – Plaza Ballroom A/B. Attendees, exhibitors and workshop instructors can meet and network.

Enjoy Continental Breakfast and Lunch

A continental breakfast and lunch will be provided each day, along with several breaks, giving attendees time to interact with each other.

Enhance Your Learning at the Expo

COMMON Focus 2008 will feature a tabletop-style exhibition area, featuring a limited number of exhibitors.

Supplement the skills and knowledge you gain in workshop sessions at the COMMON Expo, located in Plaza Ballroom A/B. You can get a hands-on introduction to the latest technology solutions from providers in an open and accessible forum. You'll also be able to meet representatives from companies you currently do business with—and many from companies you should be doing business with.

Browse the Focus 2008 Expo and learn about many innovations from leading companies in the industry. Top IT professionals are willing and ready to demonstrate their latest solutions. These experts have the in-depth knowledge you need to help you make the right choices for your IT department.

See what's new, and find ways to reduce costs and improve productivity in your IT department. With many different technologies on display, attendees can view and get hands-on demonstration on the latest System i-related solutions available to them. Compare alternatives and determine what's right for you.

Mingle at Receptions in the Expo

During the first two evenings of the conference, you can enjoy refreshments and hors d'oeuvres with exhibitors and your fellow attendees.

Welcome Reception

Sunday, October 5
6:00 p.m. – 7:30 p.m.

All Attendee Reception

Monday, October 6
5:00 p.m. – 6:30 p.m.

Win a Prize Just for Visiting the Expo

Earn a chance to win a free gift! Take the Passport to Prizes booklet found in your registration bag to the Expo. As you



explore, be sure to stop at participating exhibitors to validate your passport. Once you've collected all the validations, drop your completed Passport Booklet in the Expo area. You'll be entered in a drawing to win an exciting prize! Multiple

winners will be drawn at 12:45 p.m. on Tuesday, and you must be in the Expo to claim your prize.

Let COMMON Know What You Think

You will be provided a paper conference evaluation form during the afternoon break on Wednesday, and the presenters will allow 10 minutes for you to complete the form before resuming their class. COMMON uses your feedback in planning future education events to better meet your educational needs. Thank you for participating.

The Crowne Plaza SFO will serve as the official hotel for COMMON's Focus 2008 Workshop Conference. All activities will take place in the Crowne Plaza SFO.

Hotel Information

Crowne Plaza San Francisco Airport
1177 Airport Boulevard.
Burlingame, California 94010
650.342.9200

On-site Hotel Arrangements

Hotel reservations are the responsibility of the attendee. COMMON will not be processing housing requests for COMMON Focus 2008. Be sure to mention "COMMON" when making your reservation.

Handicapped Access

It is COMMON's policy to comply with the Americans with Disabilities Act (ADA) by providing handicapped accessible facilities. If you find areas that are not accessible, please notify COMMON Registration, located in the Plaza Ballroom Foyer.

Exhibitor Registration and Check-In

Companies exhibiting in the Expo can pick up exhibitor badges at Registration beginning Sunday, October 5 from Noon to 8:00 p.m. All exhibitors must pick up their own individual badge and must provide a photo ID.

Speaker Check-in

Speakers may check-in and pick up their badge at COMMON Registration beginning Sunday, October 5 from Noon to 8:00 p.m., located in the Crowne Plaza SFO, Plaza Ballroom Foyer.

Attendee Registration and Check-in

All registered attendees can pick up their conference badge and conference materials at COMMON Registration beginning Sunday, October 5 from Noon

to 8:00 p.m., located in the Crowne Plaza SFO, Plaza Ballroom Foyer.

On-Site Registration

Attendees who did not pre-register should complete an On-site Registration Form. The form and payment can be submitted at COMMON Registration located in the Crowne Plaza SFO, Plaza Ballroom Foyer.

Badges

Entrance to all conference functions requires a badge. Conference badges MUST be displayed at all times during conference workshops and functions.

Conference Badge Colors

Depending on its color, your conference badge allows you access into various conference functions.

WHITE**

Full conference participation.

**NOTE: If stamped, participation is ONLY for day and/or function stamped.

YELLOW

Allow expo booth personnel access into the expo area during expo and non-expo hours.

Yellow badges and White badges stamped "Expo" DO NOT allow access to any workshops.

Conference Attire

Conference attire is casual. For your comfort, we recommend wearing comfortable shoes and bringing a sweater or light jacket, since meeting room temperatures are set to allow for maximum room capacity.

Lost and Found

COMMON is not responsible for any lost or stolen articles at the Focus Workshop Conference. Lost and found items can be reported or checked on by dialing "0" for the hotel operator and connecting with lost and found.

Workshop Handouts

Printed handouts will be provided to attendees for only the workshops they register for and attend. Electronic handouts are not provided.

Transportation around Burlingame Car Rental

If you're interested in renting a car in Burlingame, Avis is offering special discounts. Call Avis at 800.331.1212. COMMON Members should go to Member Benefits on www.common.org for the Avis Worldwide Discount #. You can also reserve a car online in the members only section of the COMMON Web site, www.common.org.

Enterprise

Enterprise Plus™ - Members Benefit Program from Enterprise Rent-a-Car. With Enterprise Plus™ you will enjoy extra speed and services - free! Go to Member Benefits on www.common.org for details.

Taxi Service

The San Francisco International Airport is approximately 3.5 miles from the Crowne Plaza SFO and the approximate cab cost is \$15.00 - one way.

Shuttle Service

There is a complimentary hotel shuttle that runs every 20 - 30 minutes, depending on the time of day, between Crowne Plaza SFO and the San Francisco Airport.

At-a-Glance

All activities take place in the Crowne Plaza SFO Hotel

Sunday, October 5

Registration Open	Noon - 8:00 p.m.	Plaza Ballroom Foyer
Welcome Reception in the Expo	6:00 p.m. - 7:30 p.m.	Plaza Ballroom A/B

Monday, October 6

Registration Open	7:30 a.m. - 5:30 p.m.	Plaza Ballroom Foyer
Continental Breakfast	8:00 a.m. - 8:30 a.m.	Plaza Ballroom Foyer
Workshop Sessions	8:30 a.m. - 12:00 p.m.	Parkside, Bayside A/B, Peninsula Ballroom A/B/CD
Beverage Break in the Expo	10:00 a.m. - 10:30 a.m.	Plaza Ballroom A/B
Lunch	Noon - 12:45 p.m.	Plaza Ballroom C
Coffee and Dessert in the Expo	12:45 p.m. - 1:15 p.m.	Plaza Ballroom A/B
Workshop Sessions	1:15 p.m. - 5:00 p.m.	Parkside, Bayside A/B, Peninsula Ballroom A/B/CD
Beverage Break in the Expo	2:45 p.m. - 3:15 p.m.	Plaza Ballroom A/B
All Attendee Reception in the Expo	5:00 p.m. - 6:30 p.m.	Plaza Ballroom A/B

4

Tuesday, October 7

Registration Open	7:30 a.m. - 5:30 p.m.	Plaza Ballroom Foyer
Continental Breakfast	8:00 a.m. - 8:30 a.m.	Plaza Ballroom Foyer
Workshop Sessions	8:30 a.m. - 12:00 p.m.	Parkside, Bayside A/B, Peninsula Ballroom A/B/CD
Beverage Break in the Expo	10:00 a.m. - 10:30 a.m.	Plaza Ballroom A/B
Lunch	Noon - 12:45 p.m.	Plaza Ballroom C
Coffee and Dessert in the Expo	12:45 p.m. - 1:15 p.m.	Plaza Ballroom A/B
Workshop Sessions	1:15 p.m. - 5:00 p.m.	Parkside, Bayside A/B, Peninsula Ballroom A/B/CD
Beverage Break in the Expo	2:45 p.m. - 3:15 p.m.	Plaza Ballroom A/B

Wednesday, October 8

Registration Open	7:30 a.m. - 12:30 p.m.	Plaza Ballroom Foyer
Continental Breakfast	8:00 a.m. - 8:30 a.m.	Plaza Ballroom Foyer
Workshop Sessions	8:30 a.m. - 12:00 p.m.	Parkside, Bayside A/B, Peninsula Ballroom A/B/CD
Beverage Break	10:00 a.m. - 10:15 a.m.	Plaza Ballroom Foyer
Lunch	Noon - 1:00 p.m.	Plaza Ballroom C
Workshop Sessions	1:00 p.m. - 4:00 p.m.	Parkside, Bayside A/B, Peninsula Ballroom A/B/CD
Beverage Break	2:15 p.m. - 2:30 a.m.	Plaza Ballroom Foyer

Monday Workshops

Tuesday Workshops

All workshops require pre-registration. Please attend the workshop you are registered for.

Disaster Recovery Primer – Ready, Set, Plan

By: Richard Dolewski

Room: Parkside

8:30 a.m. – 12:00 p.m. class (10-10:30 a.m. break)
12:00 p.m. – 12:45 p.m. lunch
12:45 p.m. – 1:15 p.m. dessert in the Expo
1:15 p.m. – 5:00 p.m. class (2:45-3:15 p.m. break)

IBM BladeCenter 101

By: Kyle Wurgler

Room: Bayside A/B

8:30 a.m. – 12:00 p.m. class (10-10:30 a.m. break)
12:00 p.m. – 12:45 p.m. lunch
12:45 p.m. – 1:15 p.m. dessert in the Expo
1:15 p.m. – 5:00 p.m. class (2:45-3:15 p.m. break)

Implementing i5/OS and i Security

By: Carol Woodbury

Room: Peninsula Ballroom C/D

8:30 a.m. – 12:00 p.m. class (10-10:30 a.m. break)
12:00 p.m. – 12:45 p.m. lunch
12:45 p.m. – 1:15 p.m. dessert in the Expo
1:15 p.m. – 5:00 p.m. class (2:45-3:15 p.m. break)

Getting Started with DB2 Web Query (LAB)

By: Gene Cobb

Room: Peninsula Ballroom A

8:30 a.m. – 12:00 p.m. class (10-10:30 a.m. break)
12:00 p.m. – 12:45 p.m. lunch
12:45 p.m. – 1:15 p.m. dessert in the Expo
1:15 p.m. – 5:00 p.m. class (2:45-3:15 p.m. break)

RPG IV for Beginners (LAB)

By: Jim Martin

Room: Peninsula Ballroom B

8:30 a.m. – 12:00 p.m. class (10-10:30 a.m. break)
12:00 p.m. – 12:45 p.m. lunch
12:45 p.m. – 1:15 p.m. dessert in the Expo
1:15 p.m. – 5:00 p.m. class (2:45-3:15 p.m. break)

Implementing IBM i on JS12 and JS22

By: Vess Natchev,

Room: Bayside A/B

8:30 a.m. – 12:00 p.m. class (10-10:30 a.m. break)
12:00 p.m. – 12:45 p.m. lunch
12:45 p.m. – 1:15 p.m. dessert in the Expo
1:15 p.m. – 5:00 p.m. class (2:45-3:15 p.m. break)

Subprocedures, Modules & Service Programs: Subroutines on Steroids

By: Ted Holt

Room: Peninsula Ballroom C/D

8:30 a.m. – 12:00 p.m. class (10-10:30 a.m. break)
12:00 p.m. – 12:45 p.m. lunch
12:45 p.m. – 1:15 p.m. dessert in the Expo
1:15 p.m. – 5:00 p.m. class (2:45-3:15 p.m. break)

Systems Management

By: Larry Bolhuis

Room: Parkside

8:30 a.m. – 12:00 p.m. class (10-10:30 a.m. break)
12:00 p.m. – 12:45 p.m. lunch
12:45 p.m. – 1:15 p.m. dessert in the Expo
1:15 p.m. – 5:00 p.m. class (2:45-3:15 p.m. break)

Web Services and SOA for the RPG Developer (LAB)

By: Dan Hiebert

Room: Peninsula Ballroom A

8:30 a.m. – 12:00 p.m. class (10-10:30 a.m. break)
12:00 p.m. – 12:45 p.m. lunch
12:45 p.m. – 1:15 p.m. dessert in the Expo
1:15 p.m. – 5:00 p.m. class (2:45-3:15 p.m. break)



Wednesday Workshops

Lotus Domino Admin & Upgrade

By: Kim Greene

Room: Parkside

8:30 a.m. – 12:00 p.m. class (10-10:15 a.m. break)
12:00 p.m. – 1:00 p.m. lunch
1:00 p.m. – 4:00 p.m. class (2:15-2:30 p.m. break)

RD*i* & RD*i* SOA

By: Claus Weiss

Room: Bayside A/B

8:30 a.m. – 12:00 p.m. class (10-10:15 a.m. break)
12:00 p.m. – 1:00 p.m. lunch
1:00 p.m. – 4:00 p.m. class (2:15-2:30 p.m. break)

Where Do I Start to use Embedded SQL

By: Ted Holt

Room: Peninsula Ballroom C/D

8:30 a.m. – 12:00 p.m. class (10-10:15 a.m. break)
12:00 p.m. – 1:00 p.m. lunch
1:00 p.m. – 4:00 p.m. class (2:15-2:30 p.m. break)

V6R1 Performance Tools (LAB)

By: Dawn May

Room: Peninsula Ballroom A

8:30 a.m. – 12:00 p.m. class (10-10:15 a.m. break)
12:00 p.m. – 1:00 p.m. lunch
1:00 p.m. – 4:00 p.m. class (2:15-2:30 p.m. break)



**intense,
focused
education**



**read the
abstracts for
each workshop
by day
at**

www.common.org/focus

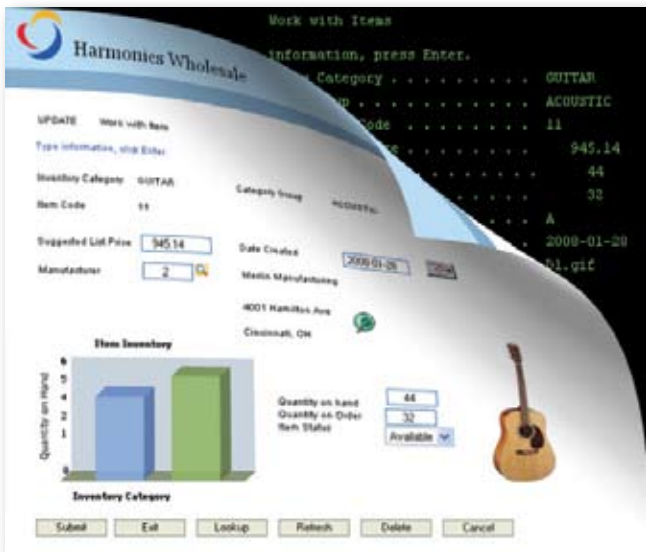
2008 - 2009 Upcoming COMMON Events

- | | |
|--|---|
| October 29, 2008 | Webcast: IBM i and IBM BladeCenter – Which BladeCenter Solution is Right for You |
| November 20, 2008 | Webcast: Exploring the DBA Tools in System i Navigator |
| November 25 and
December 2–16, 2008 | Webinar: EGL and Rational Business Developer |
| December 11, 2008 | Webcast: What's New for RPG in V6R1 |
| April 26 – 30, 2009 | COMMON 2009 Annual Meeting and Exposition
Reno, Nevada |
| April 26 – 28, 2009 | COMMON 2009 IT Executive Conference
Reno, Nevada |



They won't believe these are your System i Applications !

 **WebSmart Presto** instantly Web Enables your 5250 applications with NO code changes



5250 screen enhanced with new images, graphs, calendars & more

Keep your System i relevant in the eyes of your users, customers and upper management. The fastest way to do this is to use Presto to instantly web enable all of your existing 5250 applications. Your users get browser based access to existing RPG or Cobol applications and menus in a modern look that is easier for users to navigate.

Presto instantly extends the life of your 5250 applications and helps you rapidly achieve your System i Modernization goals. You also have full access to the client side code to further modernize the look and functionality of your existing screens by adding images, Google maps, AJAX, graphs, calendars, drop down boxes & other UI elements.

- ✓ **No need to change** any RPG, Cobol or DDS source code
- ✓ **Zero 5250 OLTP** – 100% Batch mode
- ✓ **Global options** give all your apps an instant modern web look
- ✓ **Runs in a browser** with no other PC software required
- ✓ **Enterprise Ready:** Environment and multi-language support
- ✓ **Affordable option for unlimited users**
- ✓ **Use your existing development staff**

► **Purchase Presto and get Nexus Portal License Free* !**

Nexus Portal provides a secure framework for all your web enabled & existing web applications as well as a menuing system. It also includes document management (ECM) and Executive Dashboards.

Visit www.bcdsoftware.com/presto for complete details and a Free Trial. Turn your users into Believers !

Presto is a component of BCD's ClearPath Modernization suite that also includes: WebSmart PHP, WebSmart ILE, Nexus Portal, Clover Query & Catapult. Learn more at www.bcdsoftware.com/clearpath

Visit BCD
Booth
60
COMMON FOCUS



BCD

(630) 986-0800
sales@bcdsoftware.com
BCDsoftware.com

Download a FREE trial

Attend a BCD Webinar

Schedule a Live Web Demo

Hire BCD for Services

Thank You...ELITE Exhibitors



3Com
Table 35
3Com Corporation is a leading provider of secure, converged voice and data networking solutions for enterprises of all sizes.



ASNA - A Blue Phoenix Company
Table 44
ASNA, a BluePhoenix company, provides comprehensive solutions for modernizing System i applications to RPG on the Microsoft .NET platform



BOSaNOVA, Inc.
Table 11
BOSaNOVA, Inc. is the leading provider of Thin Clients, Security Encryption Appliances, and iSeries Connectivity Solutions.



Business Computer Design Int'l, Inc.
Table 60
Rapid System i Modernization is a Reality with BCD. Build your own Integrated suite: WebSmart PHP or ILE CGI, Presto, Nexus Portal, Clover Query, SmartCharts & Catapult.



Bytware, Inc.
Table 17
"Innovative security, anti-virus, monitoring, notification, and consoling for IBM i, AIX, Linux, and Domino."



Help Systems
Table 1
Help/Systems provides operations automation, business intelligence, and programmer productivity software for the IBM® System i™



LANSA
Table 45
LANSA's application development and integration tools help companies modernize and extend their existing IT systems.



MKS, Inc.
Table 6
MKS is a leading provider of the application lifecycle management (ALM) platform MKS Integrity.



New Generation Software
Table 12
New Generation Software develops NGS-IQ Business Intelligence Solutions and The Concert Series Financial Management System.
www.ngsi.com



nuBridges, Inc.
Table 33
nuBridges is a leading provider of software and managed services to protect sensitive data at rest and in transit.



PowerTech Group, Inc.
Table 30
PowerTech is your security expert in managing evolving compliance and data privacy threats.



ProData Computer
Table 32
Just DBU it. ProData unleashes the power of data!
Connect to new worlds from System i.



Profound Logic Software
Table 3
A leading provider of modernization tools and services for the System i and Power Systems shops with solutions for rapid Web development, on-the-fly green-screen modernization, code editing, RPG to Web conversion, and database editing.



RJS Software Systems
Table 25
Make your office paperless with products and services from RJS Software.



Vision Solutions
Table 10
Vision Solutions, Inc. is the world's leading provider of high availability, disaster recovery and data management solutions for the IBM Power Systems Market.

COMMON Focus 2008 Exhibitor Listing

as of September 22, 2008

3Com	35	MKS, Inc.	6
ARCAD Software, Inc.	38	New Generation Software, Inc.	12
ASNA – A Blue Phoenix Company	44	nuBridges, Inc.	33
BOSaNOVA	11	The PowerTech Group, Inc.	30
Business Computer Design Int'l, Inc.	60	ProData Computer	32
Bytware, Inc.	17	Profound Logic Software	3
Canvas Systems	42	Responsive Data Systems	28
Help/Systems	1	RJS Software Systems	25
ICS Formsprint	43	Seagull Software	4
iMessaging Systems	2	Softlanding Systems/Unicom	13
LANSA	45	Software Engineering of America	14
Linoma Software	55	Vision Solutions	10

Sunday, October 5

Welcome Reception in the Expo 6:00 p.m. – 7:30 p.m.

Monday, October 6

Beverage Break in the Expo 10:00 a.m. – 10:30 a.m.

Dessert and Coffee in the Expo 12:45 p.m. – 1:15 p.m.

Beverage Break in the Expo 2:45 p.m. – 3:15 p.m.

All Attendee Reception in the Expo 5:00 p.m. – 6:30 p.m.

Tuesday, October 7

Beverage Break in the Expo 10:00 a.m. – 10:30 a.m.

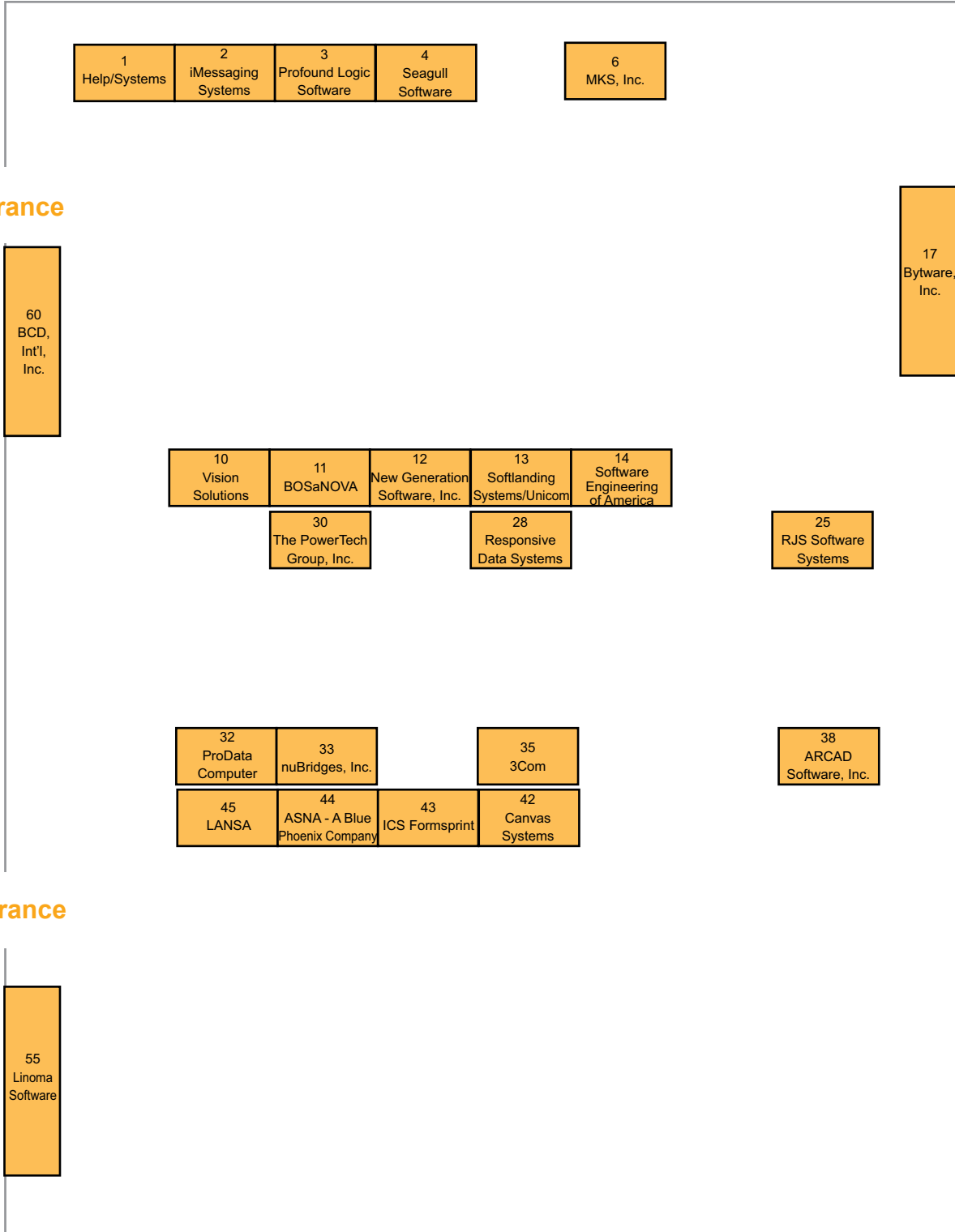
Dessert and Coffee in the Expo 12:45 p.m. – 1:15 p.m.

Plaza Ballroom
A/B

Focus Expo Floor

Plaza Ballroom A/B

Entrance



Products and Services

3Com Table 35

3Com Corporation is a leading provider of secure, converged voice and data networking solutions for enterprises of all sizes. 3Com offers a broad line of innovative products backed by world class sales, service and support, which excel at delivering business value for its customers. 3Com has been changing the way businesses communicate since it brought the first IP-PBX to market in 1998. Now, 3Com delivers integrated solutions designed for easy implementation in new or existing infrastructures. The integrated on single platform voice, collaboration and business applications let small to mid-sized businesses and large distributed global enterprises benefit from productivity-enhancing and cost-effective communications tools.

350 Campus Drive
Marlborough, MA 01752
Ph: 508.323.1513
Fax: 508.323.1111
Sharon_mccarthy@3com.com
www.3com.com

ARCAD Software, Inc. Table 38

ARCAD's ALM framework manages all software change processes, from the time a user makes a modification request until it is transferred to production. Thanks to our open and modular architecture, you can implement an entire application lifecycle management system, or employ only the tools you need today and add new functionality at your own pace. Our solutions include:

- ARCAD-Observer – application mining
- ARCAD-Skipper – change management
- ARCAD-Qualifier – test management
- ARCAD-Customer – help desk

Learn how our products can help you unify your IBM i and Web development teams.

1 Phoenix Mill Lane, Suite 203
Peterborough, NH 03458
Ph: 800.676.4709
Fax: 603.924.7377
mlangen@arcadsoftware.com
www.arcadsoftware.com

ASNA – A Blue Phoenix Company Table 44

For over 25 years, ASNA has been providing sophisticated enterprise application development products and services for IBM midrange customers. These solutions propel businesses into higher levels of performance and agility while extending the value of their investments in IBM Midrange (iSeries, AS/400, and System i) enterprise applications and the resources used to support them. ASNA is a founding member of the Midrange Alliance Program, or MAP, and is an exclusive Delivery Partner for the Microsoft NXT program for ISVs. Business applications developed with ASNA solutions are used by more than 1,000,000 end-users.

9901 W IH 10, Suite 1000
San Antonio, TX 78230
Ph: 800.289.2762
Fax: 210.408.0211
Angella.sierra@asna.com
www.asna.com

BOSaNOVA, Inc. Table 11

BOSaNOVA, Inc. is an IBM Business Partner and leader in innovative solutions development for Security Solutions, Thin Clients, and Network Appliances. Our security solutions include the Q3, a storage encryption appliance that secures your valuable backup data, and the Q3i, a secure tape drive with built-in encryption. BOSaNOVA's thin client products provide a choice between CE.Net, LINUX, and XP Embedded and offer a host of unique features. BOSaNOVA also continues to be the industry's number one provider of iSeries connectivity solutions. Our award winning, IBM ServerProven solutions provide ways for customers to reduce IT costs, increase security and improve productivity.

2012 W. Lone Cactus Drive
Phoenix, AZ 85027
Ph: 866.865.5250
Fax: 623.516.8697
jennifer@bosanova.net
www.bosanova.net

Business Computer Design Int'l, Inc. Table 60



Rapid System i Modernization is a Reality with BCD. Build your own Integrated suite with any of these award

winning BCD solutions:

Presto instantly web enables System i 5250 apps. WebSmart PHP & WebSmart ILE, create System i & multi platform web apps using templates, web services, XML, AJAX, Flash Graphs, dashboards, email.... Clover Query builds real-time browser based queries with graphical drill-downs and Excel extraction.

Catapult automates System i report & document distribution: E-mail, PDF, HTML, archive, fax, split reports, forms overlays, ECM and more.

And, we'll include a Free license of System i Nexus Portal to tie it all together for tight security, application frameworks, executive dashboards, web menus, ECM... and more. Professional services also available.

Simply stated, you'll go further with BCD. 10,000+ Clients / 35+ Industry Awards.

950 York Road
Hinsdale, IL 60521-9717
Eric@bcdsoftware.com
www.bcdsoftware.com

Bytware, Inc. Table 17

Supporting the needs of the IBM community since 1986, Bytware has one goal: to help you monitor and secure your connected world. Offering advanced monitoring, alerts, and consoling, as well as object-based network security and one-click file recovery solutions for IBM i, Bytware delivers the tools and support to make your business the best it can be. Take that toolset one step further with the most comprehensive virus protection available with anti-virus solutions for IBM i, AIX, Linux, and Lotus Domino. Bytware offers solutions backed by more than 20 years of experience and thousands of installations worldwide.
9440 Double R Boulevard, Ste. B

Reno, NV 89521
Ph : 775.851.2900
Fax : 775.851.2995
joy.richards@bytware.com
www.bytware.com

Canvas Systems

Table 42

3025 Northwoods Parkway
Norcross, GA 30071
Ph: 1.877.CANVAS.9
Fax: 770.662.1883
bhowell@canvassystems.com
www.canvassystems.com

Help/Systems, Inc.

Table 1

Help/Systems is the world's leader in software solutions for the IBM® System i™. With over 60,000 product sales to 21,000 customers worldwide, Help/Systems provides a complete management solution for your operations and data access and analysis requirements. The product line consists of three areas: automated operations (management tools for job scheduling; backup and recovery; report output; messages, resources, and system logs; system notification; performance monitoring and tuning; disk storage; networking; partitioned systems; system security; and more); business intelligence (executive dashboards, drill-down data analysis, graphical query, and reporting); and productivity solutions (development and programming tools, and database display).

6533 Flying Cloud Drive, Suite 200
Eden Prairie, MN 55344
Ph: 1.800.328.1000
Fax: 952.933.8153
Katie.carnicom@helpsystems.com
www.helpsystems.com

ICS FormSprint

Table 43

FormSprint, for your iSeries, offers tremendous flexibility when printing any document such as; Statements, Labels, Invoices, Checks, etc, in any format with: bar codes, OMR, MICR, dynamic form and font changes and much more. FormSprint's distribution capabilities are paramount in enhancing workflow in today's ever changing office structure. Whether you want to print a document with multiple copies or just one ... create a PDF to email, or fax that one invoice your customer misplaced,

FormSprint can do it all!
12 National Drive
Glastonbury, CT 06033
Ph: 860.657.3339
Fax: 860.657.8150
dtuttle@formsprint.com
www.formsprint.com

iMessaging Systems, Inc.

Table 2

iMessaging System's iNspire Telephony Suite provides easy integration of telephony with System i business applications and data. iMessaging helps organizations under pressure to improve the efficiency of telephone interactions with a reliable System i - based approach. iNspire features telephone self-service(IVR), dialling services, screen pops and intelligent call routing for inbound and outbound calling. The iNspire solution delivers efficiency and personalization to dramatically improve caller service and satisfaction. Whether your business uses a traditional PBX, VoIP, or IBM's System i IP Telephony, iNspire can help.

22 Greeley Street
Merrimack, NH 03054
Ph: 866.467.5483
Fax: 603.424.3993
Info@imessagingystems.com
www.imessagingystems.com

LANSAL

Table 45

LANSAL's RAMP product offered the most flexibility and easiest deployment. "John Dixon, CIO at Francis Marion University. Turn your legacy System i applications into valuable assets with RAMP from LANSAL. Hear how to discover the hidden value in your legacy apps with RAMP", stop by our booth to find out more. LANSAL is the leading provider of application development and integration software designed for companies running their business on the System i. Since 1987, LANSAL has been helping IT departments modernize, integrate and extend their legacy systems.

3010 Highland Parkway - Suite 275
Downers Grove, IL 60515
Ph: 800.24.LANSAL
Fax: 630.894.7001
lauras@lansa.com
www.lansa.com

Linoma Software

Table 55

ENCRYPT YOUR FIELDS, TRANSFERS AND/OR BACKUPS

Stop by the Linoma Software booth to learn how GOANYWHERE and CRYPTO COMPLETE can:

- Make securing your data easy and affordable
- Help you get PCI compliant

- Reduce your risk for penalties and fines

Other Linoma Software solutions for your System i:

RPG TOOLBOX - convert to RPG IV and free-form.

SURVEYOR/400 - graphically edit database files, import, export, FTP, convert spooled files to PDF, run SQL, schedule transfers to run on the System i or PC and much more!

1409 Silver Street
Ashland, NE 68003
Ph: 800.949.4696
Fax: 402.944.4243
sales@linomasoftware.com
www.linomasoftware.com

MKS, Inc.

Table 6

MKS Integrity for IBM i enables organizations committed to the IBM i and i5/OS to address software change management challenges while keeping business applications running smoothly. Through a workflow-centered approach, MKS Integrity for IBM i manages key development activities, inventories software assets, and enables seamless change control over test and production environments. Unlike other IBM i-centric application lifecycle management (ALM) offerings, MKS Integrity for IBM i is a single enterprise platform that covers all facets of the application lifecycle from IT Help Desk, requirements management, software configuration management, test management and release management. 410 Albert Street
Waterloo ON N2L 3V3
Ph: 1.800.265.2797
Fax: 519.884.8861
speckford@mks.com
www.mks.com

New Generation Software

Table 12

Considering DB2 Web Query or BI solutions? Check out NGS-IQ Release 7.0! Query DB2, MySQL, SQL Server, Oracle, and other databases directly from your IBM i and create attention-getting Web reports, graphical dashboards, OLAP models, spreadsheets, and more. NGS-IQ blends function and simplicity to satisfy IT, power users, analysts, and executives. Enjoy point-click, drag-drop query development, offline development and analysis, conditional new fields, run-time prompting, integrated e-mail and FTP, security, and a Query/400 API to run and enhance Query/400 queries. NGS also offers financial reporting, business performance, and healthcare analytics models, plus modular G/L, A/P, A/R, Payroll and HR software.
3835 N. Freeway Blvd., Suite 200
Sacramento, CA 95834
Ph: 800.824.1220
Fax: 916.920.1380
Treadwell@ngsi.com
www.ngsi.com

nuBridges, Inc.

Table 33

nuBridges is a leading provider of software and managed services to protect sensitive data at rest and in transit, and to transfer data internally or externally with end-to-end security, control and visibility. nuBridges encryption, key management, managed file transfer and B2B integration solutions are used to comply with security mandates and to digitally integrate business processes among enterprises, systems, applications and people. Over 3,000 customers depend on nuBridges secure eBusiness solutions to encrypt millions of credit cards, exchange billions of dollars in B2B transactions and enable countless business-critical file transfers. 1000 Abernathy Road, Suite 250
Atlanta, GA 30328
Ph: 800.251.4930
Fax: 770.730.3784
info@nubridges.com
www.nubridges.com

PowerTech Group

Table 30

PowerTech is your security expert in managing evolving compliance and data

privacy threats with automated security solutions for IBM's AS/400 and System i Servers. Our ServerProven security solutions are straightforward and save your valuable IT resources, giving you ongoing protection and peace of mind. Because iSeries and AS400 servers are used to host particularly sensitive corporate data, it is imperative that you practice proactive compliance security. As an IBM Advanced Business Partner with over 800 customers worldwide, PowerTech understands corporate vulnerability and the risks associated with data privacy and access control. Seattle, WA-based PowerTech Group was founded by security experts in 1996.

6703 S. 234th Street, #200
Kent, WA 98032
Ph: 253.872.7788
jessica.grimes@powertech.com
www.powertech.com

ProData Computer

Table 32

Access remote data.....then take it to the web!*
DBU your cross-platform data. * Access real-time data on remote systems using ONE interface! Then track database changes with DBU Audit. Experience the power of our newest release, DBU 8.0 (required for V6R1).* * Take it one step further and programmatically integrate all your remote databases including MySQL, Oracle, Microsoft SQL (and more) with *Remote Database Connect.* One more step takes it to the web with *RPG Server Pages*!
Stop by our booth to hear more about all our programmer productivity tools!
2809 S. 160th Street, Suite 401
Omaha, NE 68130
Ph: 800.228.6318
Fax: 402.697.7576
hartleyr@prodatacomputer.com
www.prodatacomputer.com

Profound Logic Software, Inc.

Table 3

Profound Logic Software is a proven leader in providing application development tools for System i and Power Systems shops worldwide. Our goal at Profound Logic is to make developers' lives easier. Our System i tools (RPGsp, Genie, iData, RPG-Alive, and more) are used by thousands of

customers to modernize green-screens, analyze legacy code, build charts and graphs for dashboards, and to easily deploy SOA, AJAX and Web 2.0 applications. While taking our success in stride, we have continued to improve our products in ways that best meet the needs of our customers.

562 Congress Park Drive
Dayton, OH 45459
Ph: 877.224.7768
Fax: 603.849.7757
sales@profoundlogic.com
www.profoundlogic.com

Responsive Data Systems

Table 28

Responsive Data Systems has been bringing "Competitive Edge" solutions to the IBM midrange market for 31 years. Our solutions include:

1. Point of Sale for Retail, counter, mobile and web
2. Distributer/Manufacturer Outside Salesman Order Entry
3. Integrated credit/debit card processing
4. Signature capture and imaging for Invoices, Receipts, and delivery tickets
5. Kiosk touch screen solutions for self service and product lookup

Our solutions are available as standalone System i applications as well as API routines that can be integrated with any System i software. Standard off the shelf interfaces exist for popular System i back office applications
1301 Shoreway Road, Suite 290
Belmont, CA 94002
Ph: 650.508.1155
Fax: 650.508.9934
robfish@rdscorp.com
www.rdscorp.com

RJS Software Systems

Table 25

RJS Software is a leading provider of content management solutions that help businesses improve productivity, make better decisions and save money. The company's software products for IBM Power Systems and Windows-PC computers allow businesses to digitize, manage and archive documents electronically, automate work processes and report delivery, and integrate data in ways never thought possible.
2970 Judicial Road, Suite 100
Burnsville, MN 55337

Play “Passport to Prizes”

Earn a chance to win a free gift—take the passport booklet found in your registration bag to the Expo. As you explore, be sure to stop at participating exhibitors to validate your passport. Once you've collected all the validations, drop off your completed Passport Booklet in the Expo area. You'll be entered into a drawing to win an exciting prize! Winners will be drawn at 12:45 p.m. on Tuesday and you must be present in the Expo to claim your prize.

Ph: 888.757.7638
Fax: 952.736.5801
joel@rjsssoftware.com
www.rjsssoftware.com

Seagull Software Table 4

Seagull Software's LegaSuite® is a complete solution for modernizing System i applications, featuring development tools and runtime middleware to quickly and easily update green-screens with GUIs and turn 5250 transactions into Web services. LegaSuite lets you expand the functionality of your applications without changes to your proven System i platform. Companies use LegaSuite to bring back-office data to the Web, to re-engineer call center applications, and to turn System i transactions into Web services for integration with the Web and newer IT architectures.

3340 Peachtree Road NE, Suite 820
Atlanta, GA 30326
Ph: 404.760.1560 x4297
Fax: 404.760.9588
info@seagullsoftware.com
www.seagullsoftware.com

SoftLanding Systems/UNICOM Table 13

SoftLanding Systems/UNICOM, the Software Management experts, specializes in solutions that streamline your entire application development and maintenance process. Our products include multi-platform change management, application testing, and deployment solutions that streamline the development process. We also feature plug-ins for WDSC as well as information on audit support, and issue tracking.

84 Elm Street
Peterborough, NH 03458
Ph: 800.545.9485
debh@softlanding.com
www.softlanding.com

Software Engineering of America Table 14

Established in 1982 Software Engineering of America has built a worldwide reputation as a leading provider of data center software solutions, with products licensed at over 10,000 data centers worldwide. SEA's customers include 9 of the fortune 10 and over 90% of the fortune 500. SEA's product groups include a full line of Mainframe and System i solutions which includes Security and Auditing, Data Compression and Encryption, as well as Message and Resource Management. absMessage includes a GUI ,web and mobile Console giving System i users the ability to manage messages from any internet browser or hand held device.

1230 Hempstead Turnpike
Franklin Square, NY 11010
Ph: 516.328.7000
Fax: 516.354.4015
sea@seasoft.com
www.seasoft.com

Vision Solutions Table 10

Vision Solutions, Inc. is the world's leading provider of high availability, disaster recovery, and data management solutions for the IBM® Power Systems market. With a portfolio that spans the industry's most innovative and trusted HA brands, Vision's iTera™, MIMIX®, and ORION™ solutions keep business-critical information continuously protected and available. Affordable and easy to use,

Vision products help to ensure business continuity, increase productivity, reduce operating costs, and satisfy compliance requirements. Privately held by Thoma Cressey Bravo, Inc., Vision Solutions is headquartered in Irvine, California with offices worldwide. For more information visit visionsolutions.com or call 800.957.4511.

17911 Van Karmen Avenue, Suite 500
Irvine, CA 92614
Ph : 630.282.8285
Fax : 630.282.8502
Mark.koszyk@visionsolutions.com
www.visionsolutions.com

COMMON Background

What is COMMON?

COMMON is the world's largest users group of midrange IBM and IBM-compatible technology, including IBM i, System i, OS/400 and related solutions. The organization comprises more than 4,000 individual and corporate members, representing more than 20,000 IT professionals.

COMMON focuses on Community, Education, and Advocacy for the IBM i community, providing a platform for networking, educational resources, and a leadership voice within the IT industry and to IBM. The organization offers a wide range of educational offerings as part of its "COMMON...Customized" model, including an Annual Meeting and Exposition, regional conferences, Webcasts, and Webinars.

COMMON is a leader in providing IT professionals with education, tools, resources and networking opportunities to help them succeed in their professional and personal lives. COMMON membership provides you with an invaluable opportunity to be part of this strong community, and allows you access to the many members-only benefits that exclusive to COMMON. Some of these benefits include access to the following:

COMMON Membership gives you:

- COMMON educational events, including the Annual Meeting and Exposition, Focus, and other regional conferences with special member pricing
- Web-based Education, including free Webcasts and special member-priced Webinars
- A leadership voice to IBM and the IT industry
- Networking and membership directory of COMMON members
- COMMON.CONNECT, the bi-monthly professional journal
- COMMON Connector, the monthly e-newsletter
- IBM Certification discounts
- COMMON On-line Networking community through iSociety
- COMMON Career Center, the exclusive IBM i job board for employers and candidates

COMMON Memberships

COMMON offers three types of memberships: Corporate, Individual and User Group.

Corporate Membership

With a corporate membership, a corporation pays a single annual fee which allows each employee to take advantage of COMMON's resources. One person is designated as the official representative and will receive all COMMON mailings and notifications. **Cost is U.S. \$395 per year.**

Individual Membership

Individual membership gives you the exclusive benefits of being a COMMON member. It allows conference registration of the member only and is non-transferable. Each individual member receives all COMMON mailings and notifications. **Cost is U.S. \$125 per year.**

User Group Membership

Available only to Local User Groups (LUGs), Affiliated User Groups (AUGs), Colleges and Sister User Groups (SUGs). One person is designated as the official representative and will receive all COMMON mailings and notifications. Similar to corporate memberships, user group members may take advantage of COMMON resources with this type of membership. **Cost is U.S. \$395 per year.**

NOTE: All memberships are annual and are valid January through December. Memberships cannot be prorated. Membership is required in order to receive the member registration rate at COMMON events.



Strategic Vision

To be a recognized leader and industry source for advocacy, community and education in Information Technology

COMMON Code of Ethics

Objective:

This Code of Ethics for COMMON has been adopted to promote and maintain fair dealing and reasonable conduct at all COMMON events. Adherence to the Code is required for membership in COMMON or participation in any COMMON events and any violation of the Code may be punishable in accordance with COMMON's disciplinary policies and procedures. From time to time, the COMMON Board of Directors shall review this Code of Ethics to ensure that it is consistent with commonly recognized and accepted principles of fair conduct.

In recognition of the special relationship between COMMON and IBM and the membership's need for information about IBM products and services, the Board of Directors may determine from time to time that displays and promotional sessions regarding such products and services are not a violation of COMMON's rules and regulations.

Responsibility:

The Judicial Affairs Council may interpret COMMON's Code of Ethics; however, the COMMON Board has final interpretation. The Board of Directors or their designee may make any exceptions to the Code of Ethics.

Statement of Principles:

1. At all COMMON events, the bylaws, codes, rules, regulations and policies of COMMON shall be strictly observed and enforced.
2. COMMON members, and participants in COMMON events, shall promote and encourage the highest level of ethics within the industry.
3. COMMON members, and participants in COMMON events, shall support efforts to improve the industry's products and to encourage the research and development of new products.
4. All sessions presented at a COMMON event are open to the press for reporting purposes unless the presenter designates otherwise. COMMON members and participants in COMMON events shall refrain from any activity that would violate the intellectual property rights of COMMON or any other organization or person.
5. Prices may not be published or discussed at any regularly scheduled COMMON meeting (e.g., session, CUDs or BOFS) subject to the provisions of the COMMON Conference Offerings Policy.
6. Exceptions to the Conference Offerings Policy must be approved in advance by the COMMON Board of Directors.
7. Use of COMMON events for the purpose of soliciting business is strictly prohibited other than provided by the COMMON Conference Offerings Policy or other policies.
8. Sponsored exhibitions and demonstrations must adhere to the Conference Offerings Policy.
9. The use of COMMON events for purposes of soliciting employment or employees is strictly prohibited.

Mission

COMMON's mission is to serve as an independent IT user group offering member defined, cost-effective, quality products and services that focus on i5/OS and AIX Systems and

Foster leadership in the IT industry and provide advocacy on IT issues

Deliver technical, application and professional development education

Facilitate networking and build community among IT professionals

For a copy of the COMMON Conference Offerings Policy, go to www.common.org/conofferings.html



Meet the face of your next security breach.

It's the face of your programmer, your controller, your sales manager, your consultant, your intern. Without proper security you're an easy target—and the risk can come from where you least expect it. **Take control of your data with Bytware solutions for security, anti-virus, monitoring, and alerts.**

- network security and access control
 - native anti-virus solutions
- automated monitoring & alerts
- consoling of multiple systems
- management of remote systems
 - instantaneous file recovery
- real-time screen sharing & monitoring
- support for regulatory compliance

Secure and manage more effectively. Find out how at booth 17.

More information also available online at www.bytware.com, or call us at 800.932.5557.

BYTWARE, INC.
Monitoring & Securing a Connected World.™



Solutions designed for